



Linden Oaks Medical Campus
10 Hagen Drive Suite #240 Rochester, NY 14625
(585) 383-8830

David E. Burns, Jr., M.D.

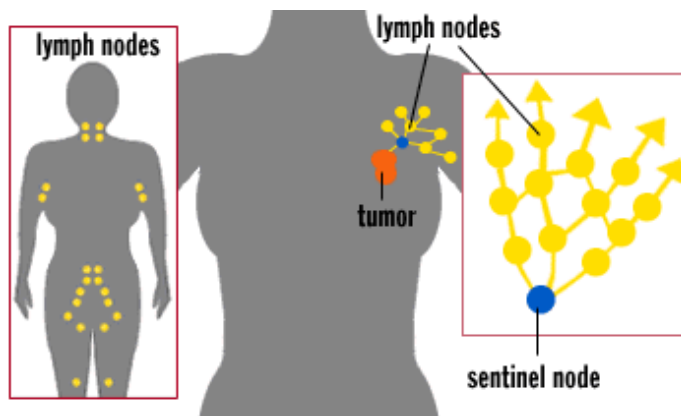
Christopher B. Caldwell, M.D.
Victoria U. Nugent, NP

Robert J. Tripp, M.D.
Stephanie N. Yu, RPA-C

Brian P. Watkins, M.D.

Sentinel Lymph Node Injection

Your doctor has scheduled you for surgery of the breast or removal of a malignant melanoma as well as a sentinel lymph node biopsy. This procedure will help to identify the “sentinel” lymph node(s) – where cancer cells from a breast tumor/melanoma would travel first.



In preparation for this procedure, a radiologist from the Nuclear Medicine Department will inject a radioactive substance in four or five areas around the tumor or biopsy site in your breast. This procedure is usually done the day before or the morning of your scheduled surgery to allow enough time for the radioisotope to travel to the sentinel lymph nodes. In addition, your doctor may have requested that the Nuclear Medicine technologist take a set of pictures or images of the injection site and sentinel lymph nodes after the injections. When you reach the operating room, your surgeon may also inject a special blue dye around the tumor site. This will be tracked as it travels to the lymph nodes and help your surgeon to identify the sentinel lymph node. Using both the radioisotope and blue dye ensures a higher success rate in locating the sentinel lymph node.

The amount of radioactive material that will be injected is very small and poses no threat to you or anyone around you. If you are pregnant or breastfeeding let your doctor know before this procedure is performed.

Your appointment for this procedure is _____ at the location circled below.

Rochester General Hospital
Nuclear Imaging Dept. X-ray
1425 Portland Ave.
Rochester, NY 14621
(585) 922-4044

Unity Hospital
Nuclear Medicine X-ray Dept.
1555 Long Pond Road
Rochester, NY 14626
(585) 723-7112

Highland Hospital
Nuclear Imaging Dept
1000 South Ave.
Rochester, NY 14620
(585) 341-8062

B&I Radiology
Clinton Crossings Location, Suite 100
995 Senator Keating Blvd Building E
Rochester, NY 14618
(585) 241-6400